



13 YILDIZ GROUP



*Our Vegetable
&
Seedling
Varieties*

TOMATO



PRODUCT CODE: H26
COCKTAIL TOMATO

TOLERANCE/RESISTANCE: TYLCV, FOL, FORL
GROWING AREA, PERIOD: WINTER-TYPE GREENHOUSE
PLANT: VERY STRONG, LONG-LASTING PLANT
FRUIT: HARD, BRIGHT RED, OVAL, HIGH QUALITY FRUIT, 20 G
SUPERIORITY:



PRODUCT CODE: K38
VINE TOMATO

TOLERANCE/RESISTANCE: TYLCV, FOL, FORL
GROWING AREA, PERIOD: WINTER-TYPE GREENHOUSE
PLANT: VERY STRONG, LONG-LASTING PLANT
FRUIT: HARD, BRIGHT RED, ROUND, HIGH-QUALITY FRUIT
SUPERIORITY:



PRODUCT CODE: R40B
HEIRLOOM TOMATO

TOLERANCE/RESISTANCE:
GROWING AREA, PERIOD: SPRING, FALL - GREENHOUSE
PLANT: STABLE PLANT, HIGH YIELD
FRUIT: HARD, OBLATE, HIGH QUALITY FRUIT, 160 G
SUPERIORITY:



PRODUCT CODE: Z10
INDETERMINATE TOMATO

TOLERANCE/RESISTANCE: TYLCV, FOL, FORL, N
GROWING AREA, PERIOD: OPEN FIELD, GREENHOUSE
PLANT: STRONG PLANT, ABUNDANT LEAVES
FRUIT: OBLATE, 200–300 G
SUPERIORITY: CILIMUM LOOK, HIGH QUALITY, HARD FRUIT

TOMATO



PRODUCT CODE: H6

INDETERMINATE TOMATO

TOLERANCE/RESISTANCE: TYLCV, FOL, FORL, N

GROWING AREA, PERIOD: OPEN FIELD, GREENHOUSE

PLANT: STRONG PLANT, STRONG PLANT ROOT STRUCTURE

FRUIT: OBLATE, 200–300 G

SUPERIORITY: CILIUUM LOOK, HIGH QUALITY, HARD FRUIT



PRODUCT CODE: 1409

INDETERMINATE TOMATO

TOLERANCE/RESISTANCE: TYLCV, FOL, FORL, N

GROWING AREA, PERIOD: WINTER-TYPE GREENHOUSE

PLANT: VERY STRONG, LONG-LASTING PLANT

FRUIT: HARD, BRIGHT RED, ROUND, HIGH QUALITY FRUIT, 300 G

SUPERIORITY:



PRODUCT CODE: L25

INDETERMINATE TOMATO

TOLERANCE/RESISTANCE: TYLCV, FOL, FORL

GROWING AREA, PERIOD: SPRING, FALL - GREENHOUSE

PLANT: VERY STRONG, LONG-LASTING PLANT

FRUIT: LARGE, HARD, HIGH QUALITY FRUIT, 220 G

SUPERIORITY: YIELDING



PRODUCT CODE: Z8

INDETERMINATE TOMATO

TOLERANCE/RESISTANCE: TYLCV, FOL, FORL

GROWING AREA, PERIOD: EARLY SPRING, FALL - GREENHOUSE

PLANT: STRONG PLANT

FRUIT: LARGE, OBLATE, HIGH QUALITY FRUIT REDDENING FROM INSIDE - 200–300 G

SUPERIORITY: DELICIOUS, MULTI-LOBED

TOMATO



PRODUCT CODE: OD3

DETERMINATE TOMATO

TOLERANCE/RESISTANCE:

GROWING AREA, PERIOD: FIELD, MEDIUM EARLY

PLANT: SUSCEPTIBLE TO POLLINATION, HIGH YIELD

FRUIT: HARD, BRIGHT RED, HIGH QUALITY FRUIT, 180 G

SUPERIORITY: DETERMINATE TOMATO OF INDETERMINATE TOMATO QUALITY



PRODUCT CODE: L28

BEEF TOMATO

TOLERANCE/RESISTANCE: TYLCV, FOL, FORL

GROWING AREA, PERIOD: SPRING, FALL - GREENHOUSE

PLANT: VERY STRONG, LONG-LASTING PLANT

FRUIT: HARD, BRIGHT RED, ROUND, HIGH-QUALITY FRUIT, 300 G

SUPERIORITY: LARGE FRUIT



PRODUCT CODE: K24

INDETERMINATE TOMATO

TOLERANCE/RESISTANCE: TYLCV, FOL, FORL

GROWING AREA, PERIOD: SPRING, FALL - GREENHOUSE

PLANT: STABLE, STRONG PLANT, HIGH YIELD

FRUIT: HARD, BRIGHT RED, DEEP ROUND, 180 G

SUPERIORITY: HIGH YIELD



PRODUCT CODE: R22

INDETERMINATE TOMATO

TOLERANCE/RESISTANCE: TSWV, TYLCV, FOL, FORL, N

GROWING AREA, PERIOD: SPRING - GREENHOUSE

PLANT: STABLE PLANT, HIGH YIELD

FRUIT: HARD, BRIGHT RED, ROUND, HIGH-QUALITY FRUIT, 160 G

SUPERIORITY: CILIUM LOOK, HIGH-QUALITY FRUIT, TSWV

CUCUMBER



PRODUCT CODE: 1204
INDETERMINATE TOMATO

TOLERANCE/RESISTANCE: TYLCV, FOL, FORL
GROWING AREA, PERIOD: SPRING, FALL - GREENHOUSE
PLANT: VERY STRONG, LONG-LASTING PLANT
FRUIT: HARD, BRIGHT RED, ROUND, HIGH-QUALITY FRUIT, 300 G
SUPERIORITY: LARGE FRUIT



PRODUCT CODE: T1
GREENHOUSE CUCUMBER BEIT ALFA

TOLERANCE/RESISTANCE:
GROWING AREA, PERIOD: FALL – SPRING
PLANT: STRONG PLANT, WITHOUT SIGHT SHOOTS
FRUIT: 17–18 CM, SLITLESS, BRIGHT GREEN
SUPERIORITY: HIGH QUALITY, STANDARD FRUIT



PRODUCT CODE: K2
GREENHOUSE CUCUMBER BEIT ALFA

TOLERANCE/RESISTANCE: MULTI-VIRUS RESISTANCE
GROWING AREA, PERIOD: FALL, SPRING - GREENHOUSE
PLANT: STRONG PLANT, WITHOUT SIGHT SHOOTS
FRUIT: 16–18 CM, SLITLESS, BRIGHT GREEN
SUPERIORITY: HIGH YIELD



PRODUCT CODE: C44
GREENHOUSE CUCUMBER BEIT ALFA

TOLERANCE/RESISTANCE:
GROWING AREA, PERIOD: FALL – SPRING
PLANT: STRONG PLANT, WITHOUT SIGHT SHOOTS
FRUIT: 18-20 CM
SUPERIORITY: HIGH YIELD

CUCUMBER



PRODUCT CODE: C7

GREENHOUSE BABY CUCUMBER

TOLERANCE/RESISTANCE:

GROWING AREA, PERIOD: SPRING – SUMMER

PLANT: STRONG PLANT, WITHOUT SIGHT SHOOTS

FRUIT: 11-13 CM

SUPERIORITY: HIGH YIELD



PRODUCT CODE: C9

GREENHOUSE BABY CUCUMBER

TOLERANCE/RESISTANCE: MULTI-VIRUS TOLERANCE

GROWING AREA, PERIOD: FALL – SPRING – SUMMER

PLANT: BLUE LEAVES, UNSEATED, MULTI

FRUIT: 11-12 CM STANDARD

SUPERIORITY: DM TOLERANT, HIGH QUALITY, STANDARD FRUIT



PRODUCT CODE: E24

FIELD BABY CUCUMBER

TOLERANCE/RESISTANCE:

GROWING AREA, PERIOD: SUMMER

PLANT: GOOD FIELD ADAPTATION - PHARTHENOCARPIC

FRUIT: 10-12 CM

SUPERIORITY: HIGH QUALITY FRUIT – DELICIOUS – CRISPY



PRODUCT CODE: 1801

GREENHOUSE CUCUMBER BEIT ALFA

TOLERANCE/RESISTANCE: MULTI-VIRUS RESISTANCE

GROWING AREA, PERIOD: FALL, SPRING - GREENHOUSE

PLANT: STRONG PLANT, WITHOUT SIGHT SHOOTS

FRUIT: 16-18 CM, SLITLESS, BRIGHT GREEN

SUPERIORITY: HIGH YIELD

MELON



PRODUCT CODE: 1302

GALIA MELON

TOLERANCE/RESISTANCE: PM, F TOLERANT

GROWING AREA, PERIOD: GREENHOUSE – OPEN FIELD

PLANT: STRONG PLANT

FRUIT: 2.5–3 KG, EXCELLENT CRISPNESS, HIGH-QUALITY FRUIT

SUPERIORITY: LONG-LIFE – LONG-LASTING PLANT



PRODUCT CODE: 1213

KIRKAĞAÇ MELON

TOLERANCE/RESISTANCE:

GROWING AREA, PERIOD: GREENHOUSE

PLANT: SUSCEPTIBLE TO POLLINATION, HIGH YIELD

FRUIT: 2–3 KG, HIGHLY CHARMING, SLIGHTLY OVAL SHAPE

SUPERIORITY: EARLY



PRODUCT CODE: 1301

GALIA MELON

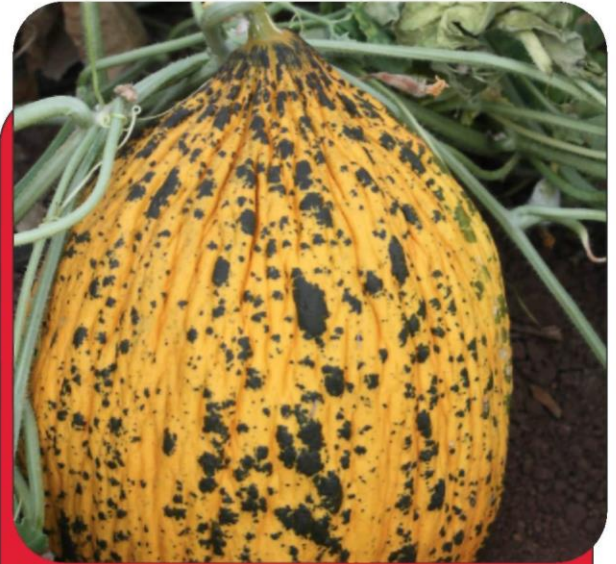
TOLERANCE/RESISTANCE:

GROWING AREA, PERIOD: GREENHOUSE – OPEN FIELD

PLANT: GOOD INSEMINATION, YIELDING

FRUIT: 2 KG, GOOD CRISPNESS AND TASTE

SUPERIORITY: SUITABLE FOR EARLY HARVEST



PRODUCT CODE: 1212

KIRKAĞAÇ MELON

TOLERANCE/RESISTANCE: PM, F TOLERANT

GROWING AREA, PERIOD: OPEN FIELD

PLANT: STRONG PLANT

FRUIT: 4–5 KG, HIGHLY CHARMING, SLIGHTLY OVAL SHAPED

SUPERIORITY: THICK SKINNED, DURABLE TO TRANSPORTATION AND STORAGE, SWEET AND AROMATIC

PEPPER



PRODUCT CODE: A41
BELL PEPPER

TOLERANCE/RESISTANCE: TSWW
GROWING AREA, PERIOD: FIELD
PLANT: STRONG PLANT, HIGH YIELD
FRUIT: LIGHT COLOR, BRIGHT, HIGHLY APPEALING
SUPERIORITY:



PRODUCT CODE: P17
BELL PEPPER

TOLERANCE/RESISTANCE: TSWW
GROWING AREA, PERIOD: FIELD – TUNNEL
PLANT: STRONG PLANT, HIGH YIELD
FRUIT: MEDIUM DARK COLOR, BRIGHT
SUPERIORITY:



PRODUCT CODE: UB3
HOT URFA PEPPER

TOLERANCE/RESISTANCE:
GROWING AREA, PERIOD: FIELD – TUNNEL
PLANT: STRONG PLANT, HIGH YIELD
FRUIT: MEDIUM THIN SKIN, DARK RED
SUPERIORITY: VERY HOT



PRODUCT CODE: K2
CAPIA PEPPER

TOLERANCE/RESISTANCE:
GROWING AREA, PERIOD: FIELD – TUNNEL
PLANT: STRONG PLANT, HIGH YIELD
FRUIT: DARK RED, BRIGHT, EVENLY SHAPED, LONG,
 HIGH QUALITY
SUPERIORITY:

PEPPER



PRODUCT CODE: G16
CAPIA PEPPER

TOLERANCE/RESISTANCE: TSWW
GROWING AREA, PERIOD: FIELD – TUNNEL
PLANT: STRONG PLANT, HIGH YIELD
FRUIT: DARK RED, BRIGHT, UNIFORM SHAPE, HIGH QUALITY
SUPERIORITY: SUITABLE FOR EXPORT AND MARKET



PRODUCT CODE: K41
LONG GREEN PEPPER

TOLERANCE/RESISTANCE: TSWW TOLERANT
GROWING AREA, PERIOD: OPEN FIELD – GREENHOUSE
PLANT: SUSCEPTIBLE TO POLLINATION, HIGH YIELD
FRUIT: THIN, HOODLESS, DARK COLORED
SUPERIORITY: 100% SWEET



SEED



PRODUCT CODE: D2
BELL PEPPER

TOLERANCE/RESISTANCE:
GROWING AREA, PERIOD: OPEN FIELD
PLANT: STRONG PLANT, HIGH YIELD
FRUIT: 4-LOBED, BRIGHT DARK GREEN
SUPERIORITY: SUITABLE FOR EXPORT

PEPPER



PRODUCT CODE: P18
BELL PEPPER

TOLERANCE/RESISTANCE: TSWW
GROWING AREA, PERIOD: OPEN FIELD
PLANT: STABLE PLANT, HIGH YIELD
FRUIT: 3-4 LOBED, BRIGHT GREEN
SUPERIORITY: THIN SKIN, DOMESTIC MARKET



PRODUCT CODE: D22
LONG THIN GREEN PEPPER

TOLERANCE/RESISTANCE: TSWW HIGH TOLERANCE
GROWING AREA, PERIOD: WINTER GREENHOUSE
PLANT: STRONG PLANT, YIELD IN COLD
FRUIT: EVEN, DARK COLORED
SUPERIORITY: 100% SWEET



PRODUCT CODE: P27
CAPIA PEPPER

TOLERANCE/RESISTANCE: TSWW TOLERANT
GROWING AREA, PERIOD: OPEN FIELD
PLANT: STABLE PLANT, HIGH YIELD
FRUIT: SHORT, CONICAL, LONG SHELF-LIFE
SUPERIORITY: SUITABLE FOR EXPORT



PRODUCT CODE: D10
BANANA PEPPER

TOLERANCE/RESISTANCE: TSWW TOLERANT
GROWING AREA, PERIOD:
PLANT: STRONG PLANT, HIGH YIELD IN COLD
FRUIT: BRIGHT GREEN, LONG, FLESHY, SMOOTH FRUIT
SUPERIORITY: EVEN-SHAPED, FLESHY, FRUIT CAN LEFT TO REDDEN

PEPPER



PRODUCT CODE: C19
BANANA PEPPER

TOLERANCE/RESISTANCE: TSWW TOLERANT
GROWING AREA, PERIOD:
PLANT: STRONG PLANT, HIGH YIELD IN COLD
FRUIT: BRIGHT GREEN, LONG, FLESHY, SMOOTH FRUIT
SUPERIORITY:



PRODUCT CODE: P15
BELL PEPPER

TOLERANCE/RESISTANCE: TSWW
GROWING AREA, PERIOD: FIELD AND TUNNEL
PLANT: STRONG PLANT, HIGH YIELD
FRUIT: MEDIUM DARK COLOR, BRIGHT
SUPERIORITY:



PRODUCT CODE: K42
LONG GREEN PEPPER

TOLERANCE/RESISTANCE: TSWW TOLERANT
GROWING AREA, PERIOD: OPEN FIELD – GREENHOUSE
PLANT: SUSCEPTIBLE TO POLLINATION, HIGH YIELD
FRUIT: THIN, HOODLESS, DARK COLORED
SUPERIORITY:100% SWEET



PRODUCT CODE: G14
LONG THIN

TOLERANCE/RESISTANCE: TSWW TOLERANT
GROWING AREA, PERIOD: GREENHOUSE
PLANT: STRONG PLANT, HIGH YIELD
FRUIT: THIN, HOODLESS, BRIGHT GREEN
SUPERIORITY: 100% SWEET

PEPPER



PRODUCT CODE: P18

CAPIA PEPPER

TOLERANCE/RESISTANCE: TSWV

GROWING AREA, PERIOD: FIELD

PLANT: STRONG PLANT, HIGH YIELD

FRUIT: DARK RED, BRIGHT, EVEN-SHAPED, LARGE, HIGH QUALITY



PRODUCT CODE: D19

LONG THIN GREEN PEPPER

TOLERANCE/RESISTANCE: TSWW HIGH TOLERANCE

GROWING AREA, PERIOD: FIELD, TUNNEL

PLANT: STRONG PLANT, HIGH YIELD

FRUIT: EVEN, DARK COLORED



PRODUCT CODE: D20

LONG THIN GREEN PEPPER

TOLERANCE/RESISTANCE: TSWW HIGH TOLERANCE

GROWING AREA, PERIOD: FIELD – TUNNEL

PLANT: STRONG PLANT, HIGH YIELD

FRUIT: EVEN, DARK COLORED

SUPERIORITY: 100% SWEET



PRODUCT CODE: K25

LONG GREEN PEPPER

TOLERANCE/RESISTANCE: TSWW TOLERANT

GROWING AREA, PERIOD: OPEN FIELD – GREENHOUSE

FRUIT: SUSCEPTIBLE TO POLLINATION, HIGH YIELD

FRUIT: EVEN, DARK COLORED

PEPPER



PRODUCT CODE: S13

LONG GREEN PEPPER

TOLERANCE/RESISTANCE:

GROWING AREA, PERIOD: FIELD

PLANT: SUSCEPTIBLE TO POLLINATION, HIGH YIELD

FRUIT: THIN, BRIGHT, GREEN

SUPERIORITY:



PRODUCT CODE: B11

LONG GREEN PEPPER

TOLERANCE/RESISTANCE:

TSWW TOLERANT

GROWING AREA, PERIOD:

FIELD

PLANT: STRONG PLANT, HIGH YIELD

FRUIT: EVEN, DARK COLORED

SUPERIORITY:



PRODUCT CODE: B26

LONG GREEN PEPPER

TOLERANCE/RESISTANCE: TSWW HIGH TOLERANCE

GROWING AREA, PERIOD: FIELD, TUNNEL

PLANT: STRONG PLANT, HIGH YIELD

FRUIT: EVEN, DARK COLORED

SUPERIORITY: HOT



PRODUCT CODE: K26

LONG GREEN PEPPER

TOLERANCE/RESISTANCE: TSWW TOLERANT

GROWING AREA, PERIOD: GREENHOUSE

PLANT: STRONG PLANT, HIGH YIELD

FRUIT: EVEN, DARK COLORED

SUPERIORITY:



PRODUCT CODE: NADIDE
DETERMINATE GREEN BEAN

TOLERANCE/RESISTANCE:

GROWING AREA, PERIOD: FIELD – GREENHOUSE

PLANT:

FRUIT: HIGHLY APPEALING, HIGH QUALITY

SUPERIORITY: EARLY, DELICIOUS, HIGHLY APPEALING



PRODUCT CODE: NADIDE
DETERMINATE GREEN BEAN



PRODUCT CODE: PASHA
ROUND EGGPLANT

TOLERANCE/RESISTANCE: NO NEED FOR GRAFT

GROWING AREA, PERIOD: GREENHOUSE – OPEN FIELD

PLANT: VERY STRONG - YIELDING - LONG-LIFE PLANT

FRUIT: LARGE, THORNLESS, DARK COLORED, HIGH QUALITY FRUIT

SUPERIORITY: FOR ROASTING, QUICK COOKED, DELICIOUS



PRODUCT CODE: PASHA
ROUND EGGPLANT



13 YILDIZ GROU



TOMATO



MELON

**NATIONAL CAPITAL
NATIONAL SEED
LOCAL
PRODUCTION
CLEAN FOOD**



PEPPER



EGGPLANT



CUCUMBER